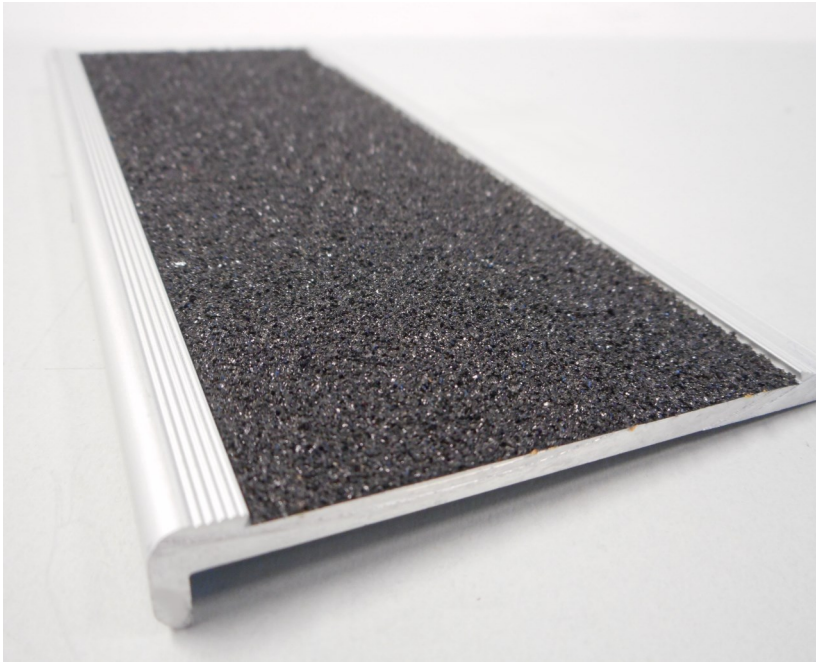


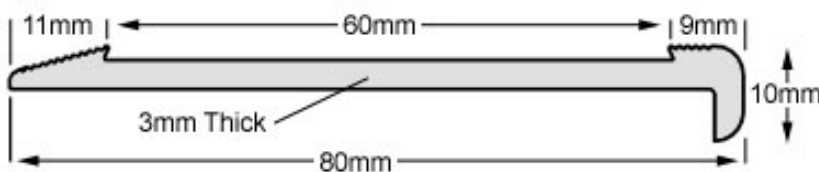


DUNSTONEMAZE

GUARDIAN SLIMLINE STAIR NOSING - TECHNICAL DATA SHEET



PROFILE



APPLICATION

The Guardian Slimline Stair Nosing can be installed both internal and external for new and existing applications.

SUITABLE FOR:

Most substrates, stone, tiles, timber, terrazzo, concrete, pavers, brick, vinyl and carpet.

BENEFITS

Pre-cut and pre-drilled for easy installation

Waterproof and weatherproof

Bevelled edge for existing applications

Designed to meet AS1428:2009 for luminance and AS4586:2004 for slip resistance

SPECIFICATION

Length	Up to 5800mm in one piece
Thickness	3mm
Profile	80mm x 10mm
Turndown	90 degree angle
Aluminium	Natural Anodised
Inserts	Silicon Carbide, Polyurethane
Insert Colours	
Silicon Carbide	Black, Grey, Yellow
Polyurethane	Black, Yellow, Terracotta
Slip Rating	R13
Setting	Internal / External

TEXO Australasia Pty Ltd
A.B.N. 22 054 925 101

37 Enterprise Circuit Prestons NSW 2170 Australia
T 1300 00 TEXO (8369) F +612 8212 5893 E sales@texo.net.au texo.net.au/dunstone-maze

